

Fiber Optic Multiplexer Modules

10 Gigabit Ethernet Media Converter

8-Port Switch, Optically Compatible with Mini 4, MiniMux 2 or Video 3

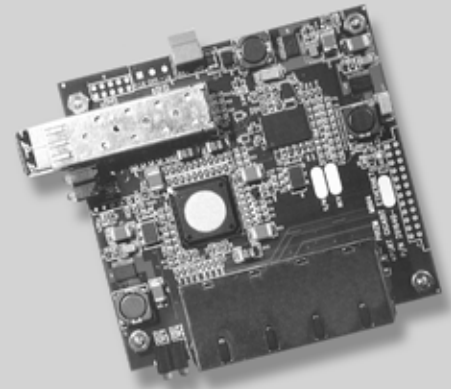
Description

8-Port 10 Gigabit Switch Ethernet Media Converter provides an elegant solution for converting 10 / 100 / 1 G twisted pair media to fiber optic media at up to 10 Gbps.

It's a lightweight and compact media converter with integrated 8-port switch in a PC-104 footprint. The system auto configures to interface with either 10Base-T, 100Base-T or 1000Base-T on the RJ45 jack. The 10 Gigabit Ethernet switch is available as an OEM board solution or a stand alone product in its own packaged solution.

Features

- Fully compliant with IEEE 802.3, 802.3u, 802.3ab, 802.3ae (10 G over fiber) and 802.3aq (10 G over multimode fiber) standards
- 8-port 10 / 100 / 1000 Mbps auto sensing, auto MDI / MDIX
- Designed for operation in harsh environments (-40° to +70° Celsius)
- Full system diagnostics with GUI output
- Jumbo frame support
- Supports automatic address learning and aging
- Custom configurations available



Typical Applications

- Subsea Vehicles
- Ethernet Sensor Pods
- Radar
- Machine Vision
- Electro-Optical Sensor Telemetry
- CPU - CPU

Preliminary

PRIZM™

MOOG
COMPONENTS GROUP

Fiber Optic Multiplexer Modules

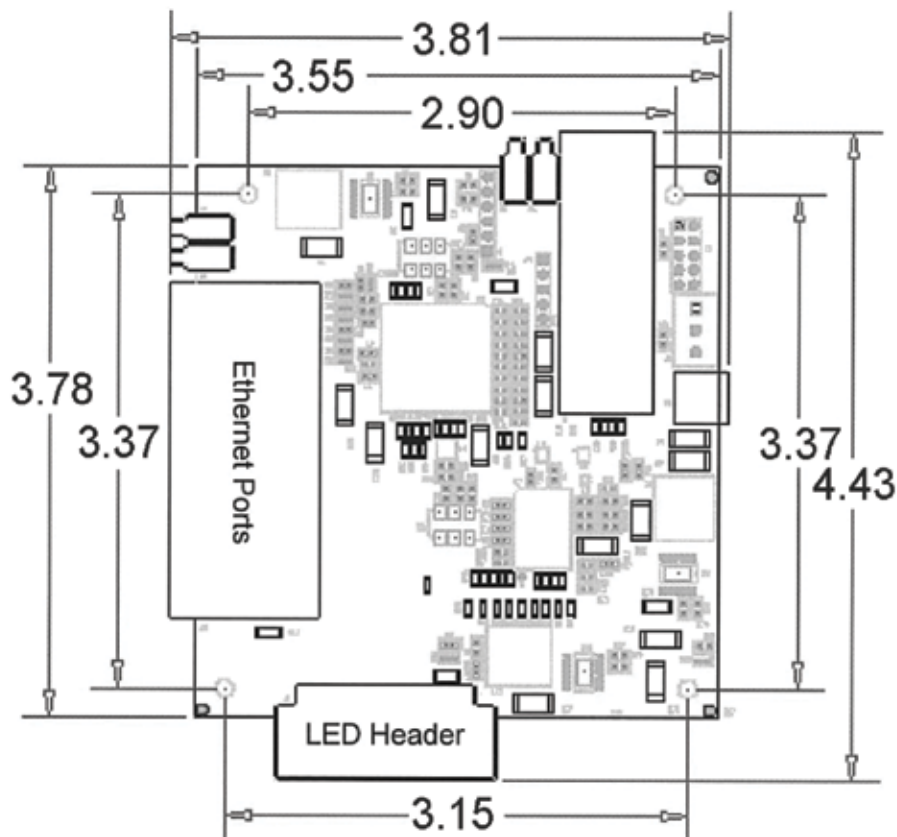
Specifications

Supply	
Voltage	+5 VDC (other options available)
Power	7.5 watts @ 5 VDC
Optical	
Fiber	Singlemode or multimode
Link Rate	10 Gbps
Optical Connector	LC
Optical Budget	25 db typical
Distance	Singlemode up to 50 Km Multimode up to 300 M <i>Longer distances available in custom configuration</i>
Wavelengths	
Singlemode	1310 nm, 1550 nm (single fiber BIDI option available)
Multimode	850 nm, 1310 nm (single fiber BIDI option available)
Data Via RJ-45 Connectors	
8-port 10 / 100 / 1000 Mbps auto-sensing, auto MDI / MDIX	

Interface Connectors	
Optical	LC
Ethernet	RJ-45
Power	2-pin Phoenix
Environmental	
Operating Temperature	-40° to +70° Celsius
Operating Storage	-40° to +85° Celsius
Humidity	Up to 98% non-condensing
Part Number	
Contact factory for assistance	

Preliminary

Mechanical Information



Dimensions in inches.

24 / 7 Technical Customer Support
Hotline: 610-605-6101